



Twinning Project IL/11

Implementation and Strengthening the Environmental Framework for
IPPC, Resource Efficiency and Eco-Management in Israel



Manual of Classification of Waste

Ellen Gerlach, Environmental Protection Agency Sachsen-Anhalt
Dr. Brigitte Karigl, Environmental Agency Austria

Workshop, 22.02.2017





Content of The Manual

1. Introduction
2. Approach for waste classification
3. Hazardous Properties of waste
4. Sampling and Chemical Analysis of Waste
5. Step by Step approach for Assessment of Hazardous Properties in Practice
6. Specific Components of Specific Waste Types





1.Introduction

What is the purpose of this guidance document?

- Assistance for authorities and companies
- Definition and classification of waste.
- Discrimination of mirror entries





2. Approach for waste classification

The European Waste Catalogue (EWC) is the key document for classification of waste.

- Absolute hazardous (AH) entry, marked with an asterisk (*)
- Absolute non-hazardous (ANH) entry
- Mirror entry (M)

(842 entries, 408 hazardous, 434 non hazardous, 180 mirror entries)





2. Approach for waste classification

Step 1:

Is the Waste Framework Directive (WFD) applicable?

Step 2:

Which entry of the European Waste Catalogue is applicable?





2. Approach for waste classification

Step 3:

In case of mirror entries - Is the waste a hazardous or non-hazardous waste? Does the waste display any of the hazardous properties HP1 to HP15?

Step 4:

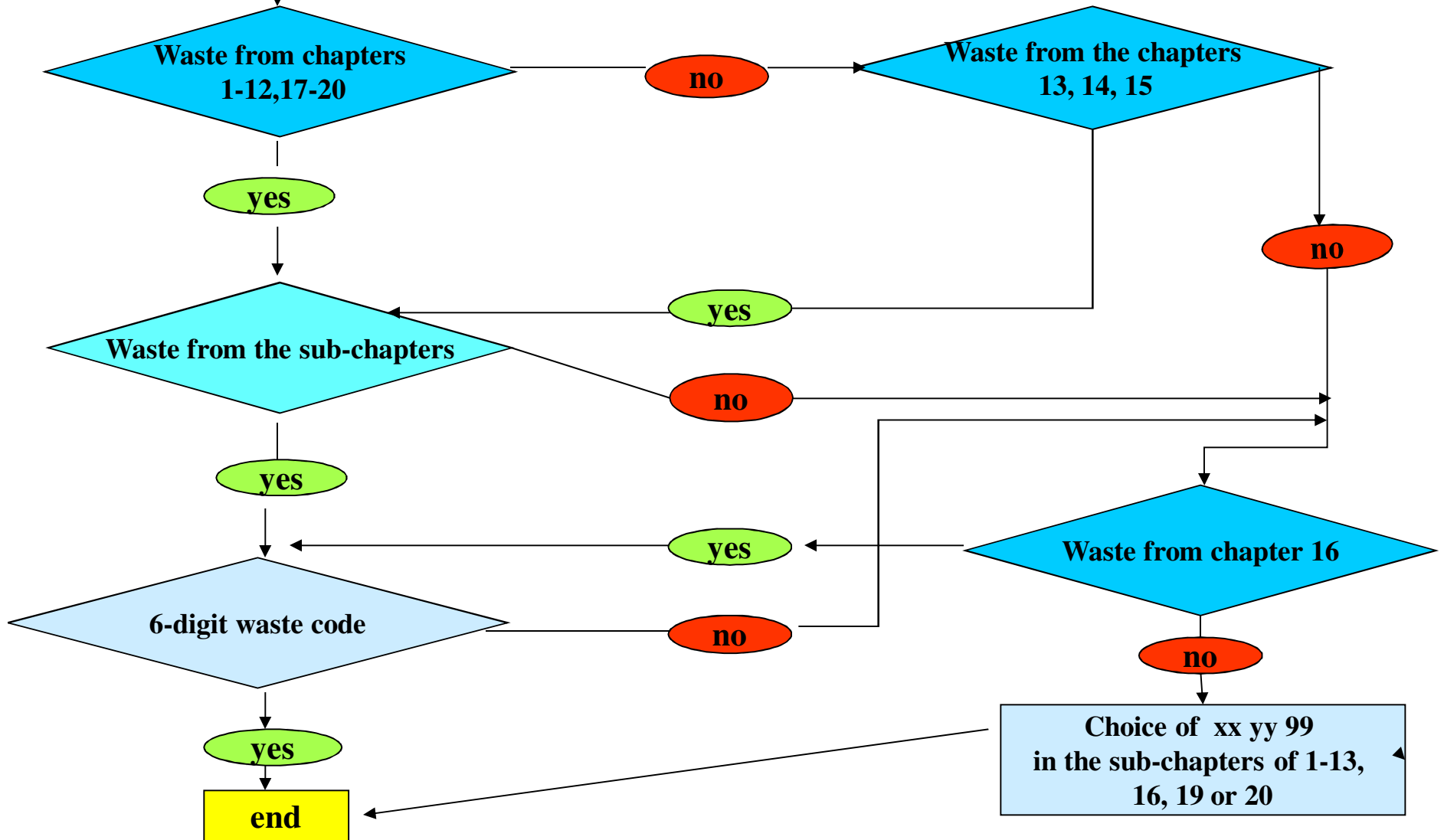
Is it likely or known that the waste contains any of the Persistent Organic Pollutants (POPs)?





START

Twinning Project IL/11
Implementation and Strengthening the Environmental Framework for
IPPC, Resource Efficiency and Eco-Management in Israel





3. Hazardous Properties

CLP-Regulation (Classification, Labelling and Packaging) (EG) Nr. 1272/2008 provides the criteria to assess the physical, human health and environmental hazards of substances.

- **Hazard statement code:** the code assigned to the hazard class and category; (e.g. a carcinogen could be H350 or H351)
- **Hazard Class:** the nature of the hazard; (e.g. a carcinogenic is 'Carc.')
- **Hazard Category:** a sub-category of the hazard class that describes the severity of the hazard; (e.g. a carcinogen could be 1A, 1B or 2)

(s. Annex VI to the CLP)





3. Hazardous Properties

- HP1 Explosive
- HP2 Oxidising
- HP3 Flammable
- HP4 Irritant – skin irritation and eye damage
- HP5 Specific Target Organ Toxicity (STOT)/
Aspiration Toxicity
- HP6 Acute Toxicity





3. Hazardous Properties

- HP7 Carcinogenic
- HP8 Corrosive
- HP9 Infectious
- HP10 Toxic for reproduction
- HP11 Mutagenic
- HP12 Release of an acute toxic gas





3. Hazardous Properties

- HP13 Sensitizing
- HP14 Ecotoxic
- HP15 Waste capable of exhibiting a hazardous property listed above not directly displayed by the original waste





4. Sampling and Chemical Analysis of Waste

- There is an European Framework on Waste Sampling (CEN/TC 15310 Part 1-5) and National Standards and Guidelines (Germany: LAGA PN 98)
- In the Council Regulation (EC) No. 440/2008 are layed down test methods pursuant to Regulation (EC) No. 1907/2006 (REACH)
- There is a number of standardized analysis methods, that can be used.





5. Step by Step approach for Assessment of Hazardous Properties in Practise

In the individual decision to classify a waste all available information must be taken into account, in particular:

- Description of the waste origin, its composition, origin and handling
- Safety data sheet of the substances in processes used
- Classification and labeling of intermediate and end products
- Documentation of known waste analyzes





6. Step by Step approach for Assessment of Hazardous Properties in Practise

Step 1: Investigation of the leachate

The chemical analysis of the aqueous leachate will provide the information whether the waste is displaying the hazardous property **HP15**.

Is the concentration of all parameters lower than the respective limit value, the hazardous properties HP1 to HP14 are examined.





5. Step by Step approach for Assessment of Hazardous Properties in Practise

Step 1: Investigation of the leachate

The chemical analysis of the aqueous leachate will provide the information whether the waste is displaying the hazardous property HP 15.

Is the concentration of all parameters lower than the respective limit value the waste is not hazardous by HP 15.

In a next step the hazardous properties HP1 – HP 14 are examined.





5. Step by Step approach for Assessment of Hazardous Properties in Practise

Step 1: Investigation of the leachate

Leachate (EN 1247-2)	[mg/kg]
Antimony	> 0.7
Arsenic	> 2
Barium	> 100
Lead	> 10
Cadmium	> 1
Chrome, total	> 10
Copper	> 50
Nickel	> 10
Mercury	> 0.2
Selenium	> 0.5
Zinc	> 50
Cyanide, easily purgeable	>5
Phenole	> 500
pH-Value	<2,5 - > 11,5





5. Step by Step approach for Assessment of Hazardous Properties in Practise

Step 2: Investigation of the Waste Composition (Total Contents of Parameters)

The following parameters are relevant for the chemical analysis of waste and the subsequent review for the assessment as hazardous or non-hazardous.





Twinning Project IL/11
Implementation and Strengthening the Environmental Framework for
IPPC, Resource Efficiency and Eco-Management in Israel



Concentration Limit for Total Contents [mg/kg]

Total Content	[mg/kg]
Metals	
Vanadium	25,000
Antimony	25,000
Copper	2,500
Cobalt	2,500
Silver	2,500
Barium	2,500
Zinc	2,500
Lead	2,500
Selen	2,500
Arsenic	1,000
Nickel	1,000
Chrome, Chrome-VI-compounds	1,000
Tin, organic compounds	1,000
Cadmium	1,000
Beryllium	1,000
Thallium	1,000
Mercury	1,000
Organic compounds	
Petroleum-derived hydrocarbon	1,000
Volatile halogenated hydrocarbons	1,000
BTEX	1,000
Polycyclic aromatic hydrocarbon (PAH)	1,000
Benzo(a)pyren	50
PCP	5
POP, without PCB, PCDD/PCDF, PBDE und PFOS	50
PCB	50
Tetra-, Penta-, Hexa- und Hepta-BDE (Sum)	1,000
PFOS	10
PCDD/PCDF	0.001
Others	
Pesticides	2,500
Artificial mineralfibres	1,000
Cyanides	1,000
Cyklial Amine	1,000





5. Step by Step approach for Assessment of Hazardous Properties in Practise

Step 2: Investigation of the Waste Composition (Total Contents of Parameters)

For metals this system applies only, if the specific metal compound contained in the waste is unknown.

For a more detailed assessment, the next Table provides information on the relevant concentration limits for metal compounds displaying hazardous properties.





6. Specific Components of Specific Waste Types

Metals

Heavy metal means any compound of antimony, arsenic, cadmium, chromium (VI), copper, lead, mercury, nickel, selenium, tellurium, thallium and tin, as well as these materials in metallic form, as far as these are classified as hazardous substances.





6. Specific Components of Specific Waste Types

Organic Parameters

Petroleum -derived Hydrocarbon (PDH)

This sum parameter covers PDH with 10 to 40 carbon atoms (C10 to C40)

- limit value of 0,1 % (1,000 mg/kg) on the single substance for the classification as hazardous





6. Specific Components of Specific Waste Types

Organic Parameters

Polycyclic Aromatic Hydrocarbons (PAH)

Only 16 PAK after EPA (US-Environmental Protection-Agency) are investigated by chemical analysis.

- limit value of 0.1 % (1,000 mg/kg) on the single substance for the classification to be hazardous
- Benzo[a]pyrene as a marker compound for carcinogenicity for certain coal tar entries (limit value of 0.005 % = 50 mg/kg for classification to be hazardous)





6. Specific Components of Specific Waste Types

Organic Parameters

Polychlorinated Biphenyls (PCBs)

- PCBs include 209 individual substances. Six of the most relevant PCBs congeners are used as so-called Ballschmider congeners in the conventional analysis (PCB-28, -52, -101, -138, -153, -180).
- Wastes with a concentration limit of 0.005 % (50 mg/kg) PCB are PCB-containing wastes, classified as hazardous waste.





6. Specific Components of Specific Waste Types

Organic Parameters

Benzene, Toluene, Ethylbenzene and Xylene (BTEX)

- BTEX is a group of related volatile organic compounds.
- Benzene as the substance with the highest danger potential is the main parameter with a concentration limit of 0.1 % (1,000 mg/kg), resultant from its carcinogenic effect.





6. Specific Components of Specific Waste Types

Organic Parameters

Volatile Hydrocarbons (VHC)

- Because most of VHCs are classified as specific target organ toxic, acute toxic, carcinogen and ecotoxic (Ocone), the concentration limit for the classification of VHC-containing wastes is 0.1 % (1,000 mg/kg).





6. Specific Components of Specific Waste Types

Organic Parameters

Persistent Organic pollutions (POPs)

In Annex IV of the EU-Regulation 850/2004 a concentration limit of 0.005 % (50 mg/kg) is fixed. If the limit value is exceeded, the POP-containing waste must be destroyed.

Meanwhile, hexachlorobutadiene, polychlorinated naphthalenes, short-chain chlorinated paraffins, endosulfan were included in the EC regulation 850/2004.





6. Specific Components of Specific Waste Types

Organic Parameters

Persistent Organic pollutions (POPs)

For polybrominated diphenylether (**PBDE**) a concentration limit value of **0.1 % (1,000 mg/kg)**, and perfluorooctanesulfonic acid (**PFOS**) of **0.05 % (50 mg/kg)** was set as the limit.





6. Specific Components of Specific Waste Types

Other Parameters

- For unknown pesticides, a concentration limit on the chemical classification for ecotoxic of 2.5 % (2,500 mg/kg) is applied.
- For materials containing asbestos in the chemical assessment the the concentration limit is 1,000 mg/kg because of the carcinogenicity.
- For cyanide containing wastes, in particular from metallurgical and galvanic processes and organic synthesis processes, concentration limit of 0.1 % (1,
- For the classification of amine (derivatives of ammonia with alkyl or aryl groups) containing wastes a concentration limit of 0.1 % (1,000 mg/kg) is applied because of the carcinogen properties of certain amines.





Twinning Project IL/11
Implementation and Strengthening the Environmental Framework for
IPPC, Resource Efficiency and Eco-Management in Israel



Contact information:

ellen.gerlach@lau.mlu.sachen-anhalt.de

brigitte.karigl@umweltbundesamt.at

